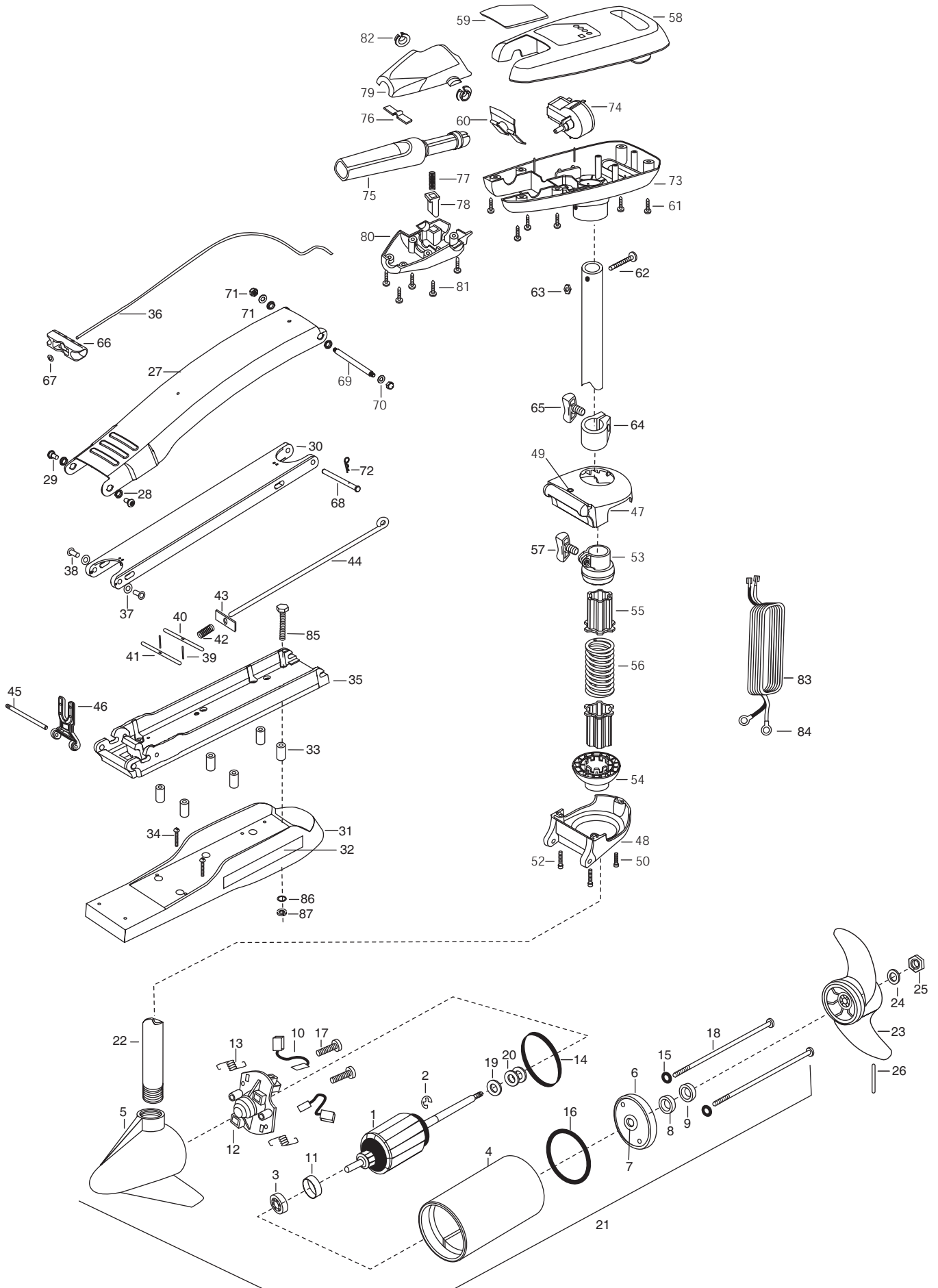


RT65/SC/B
65 LBS THRUST
24 VOLT
42" SHAFT

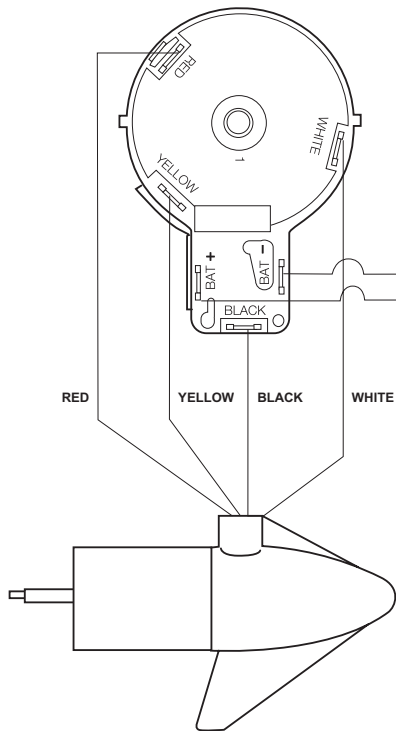


| | | | | | | | | |
|----|------------|--|----|---------|-----------------------------------|----|---------|-----------------------------------|
| 1 | 92-100-009 | ARMATURE ASSEMBLY24V 3.625 SW 65/W | 30 | 2994310 | ARM-LOWER ASSEMBLY,STD,SW,WHT | 60 | 2302743 | SPRING-DETENT (HANDLE-TILT) |
| 2 | 788-015 | RETAINING RING | 31 | 2263914 | MOTOR REST STD MAXXUM WHT | 61 | 2303412 | SCREW-6-20 X 5/8 SELF TAP [6.EA] |
| 3 | 140-010 | BEARING -BALL | 32 | 2065676 | DECAL- MOTOR REST RT-W [2. EA] | 62 | 2332102 | SCREW-10-24 X 1-3/4 SS |
| 4 | 431-304 | CENTER HOUSING ASSEMBLY 3.62 SW | 33 | 2261505 | SPACER, MOTOR REST [6.EA] | 63 | 2333101 | NUT-HEX SS NYLOC |
| 5 | 2-300-336 | BRUSH END HOUSING ASSEMBLY 3.62 SPCO WHT | 34 | 2263434 | SCREW, 8-18 X 1 PPH SS [2.EA] | 64 | 2031520 | COLLAR-DEPTH (W/O INSERT) |
| 6 | 2-400-337 | PLAIN END HOUSING ASSEMBLY 3.62 WHT | 35 | 2993983 | BOWPLATE/INSERT ASSEMBLY STD SW | 65 | 2011366 | SCREW-COLLAR/NEW KNOB SS |
| 7 | 144-049 | BEARING - FLANGE [SERVICE ONLY] | 36 | 2251601 | ROPE (40"), MAXXUM MOUNT | 66 | 2150400 | PULL-GRIP (RAW) |
| 8 | 880-003 | **SEAL | 37 | 2261708 | WASHER-3/8 X1/2X.010 SS [2.EA] | 67 | 2151700 | WASHER-EYE SHAFT(.562 OD) |
| 9 | 880-006 | **SEAL WITH SHIELD | 38 | 2236000 | BEARING NYLINER- [2.EA] | 68 | 2262606 | PIN-CLEVIS SS MAXXUM BWGR |
| 10 | 188-036 | BRUSH ASSEMBLY [2. EA] | 39 | 2152610 | SPRING-PIN (LOCKBAR) | 69 | 2262604 | PIN- BWGR UPPER THREADED |
| 11 | 725-050 | PAPER TUBE- BRUSH RETENTION | 40 | 2233601 | LOCKBAR SS (NEW 500) | 70 | 2261722 | WASHER- FLAT 5/16 SS [2.EA] |
| 12 | 738-036 | BRUSH PLATE W/HOLDER | 41 | 2233603 | LOCK BAR, REAR - SS | 71 | 2223100 | NUT- TENSION 5/16-18 SS [2.EA] |
| 13 | 975-040 | SPRING - TORSION [2. EA] | 42 | 2152701 | SPRING-(LOCKBAR) SS [2.EA] | 72 | 2260800 | CLIP- SPRING SS MAX BG |
| 14 | 337-036 | **GASKET | 43 | 2262703 | SPRING STOP | 73 | 2062552 | CONTROL BOX PLAS W/HAND 5SP W |
| 15 | 701-008 | **O-RING [2. EA] | 44 | 2153603 | EYE SHAFT-2LOCKEAR STD | 74 | 2064023 | SWITCH-FWD/REV 5 SP |
| 16 | 701-081 | **O-RING | 45 | 2260505 | PIN-HINGE (HEADLE5S) SS | 75 | 2990911 | HANDLE ASSEMBLY-W/U-JOINT SS |
| 17 | 830-007 | SCREW # 8-32 [2.EA] | 46 | 2293811 | YOKE,MAX MNT-POLYPROPYLE | 76 | 2302742 | SPRING-DETENT (OFF) SS |
| 18 | 830-008 | THRU BOLT 10-32 X 8.83 [2. EA] | ■ | 2991846 | BOWGUARD ASSEMBLY SW WHT H.CT | 77 | 2302745 | SPRING-RELEASE BUTTON SS |
| 19 | 990-067 | WASHER - STEEL THRUST | 47 | 2261968 | BRKT BASE TOP/INSERT ASSEMBLY WHT | 78 | 2303720 | RELEASE BUTTON-HANDLE |
| 20 | 990-070 | WASHER - NYLATRON [2. EA] | 48 | 2991877 | BRKT BTTM/BEARING SW W | 79 | 2060410 | HANDLE (TOP HALF) |
| 21 | 2098037 | MOTOR ASSEMBLY 24V 3.625 SW 5SPC | 49 | 2772352 | EYELET SERVICE KIT | 80 | 2060415 | HANDLE (LOWER HALF) |
| 22 | 2032034 | TUBE (COMPOSITE) 52" WHITE | 50 | 9954533 | SCREW-1/4-20 X 3/4 SS | 81 | 2303412 | SCREW-6-20 X 5/8 SELF TAP [5.EA] |
| ■ | 1378122 | PROPELLER KIT | 52 | 2263404 | SCREW-1/4-20X2 1/4 [2.EA] | 82 | 2060005 | BEARING-HANDLE PIVOT [2.EA] |
| 23 | 2091150 | PROPELLER- WEEDLESS WEDGE | ■ | 2884701 | SLEEVE/INSERT KIT | 83 | 2090600 | LEADWIRE (10 GA) RINGS |
| 24 | 2151726 | WASHER- 5/16 STD SS | 53 | 2261525 | SPRING-SLEEVE UPPER | 84 | 2020700 | TERMINAL RING, 3/8 [2.EA] |
| 25 | 2198400 | ANODE- ZINC 3.25/3.62 LWR U | 54 | 2261535 | SPRING SLEEVE, LOWER | ■ | 2994830 | BAG ASSEMBLY-MAXXUM |
| 26 | 2092600 | PIN-DRIVE SS | 55 | 2264702 | INSERT-TUBE BOWMNT [2.EA] | 85 | 2263431 | SCREW 1/4-20 X 3.5 PPH [6.EA] |
| ■ | 2991843 | MOUNT, BOW ASSEMBLY, SW STD WHT | 56 | 2262705 | SPRING, BOWGUARD,SS | 86 | 2261713 | WASHER-1/4 FLAT S/S [6.EA] |
| 27 | 2264244 | ARM-UPPER SW WHITE | 57 | 2011366 | SCREW-COLLAR/NEW KNOB SS | 87 | 2263103 | NUT-1/4-20 NYLOCK-JAM SS [6.EA] |
| 28 | 2293501 | BUSHING, STAINLESS STEEL [4.EA] | 58 | 2060264 | COVER-CTRL BOX RT WHITE | | | |
| 29 | 2263500 | BOLT, SHOULDER (MAXXUM) [2.EA] | 59 | 2195641 | DECAL-COVER RT65/SC | | | |

**Seal & Oring Kit P/N 2888460

* This item is part of an assembly. This item cannot be sold separately due to machining and /or assembly that is required.

p/n 2194921 REV.B 1-02



RT65/SC 24 VOLT

