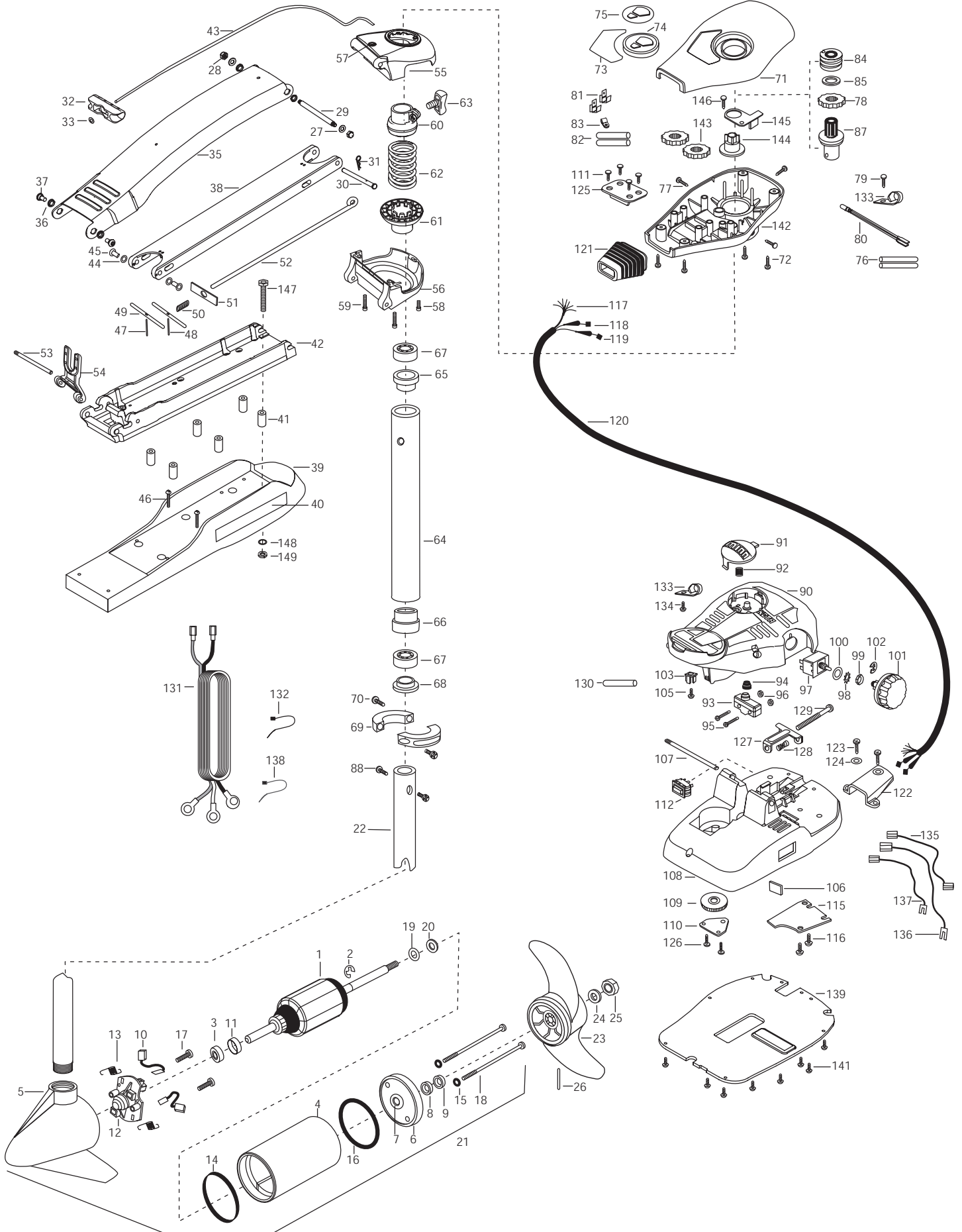


# MAXXUM 55/SC -42"

55 lbs Thrust

12 Volt

42" SHAFT



|    |            |                                      |    |         |                                    |      |         |                                      |
|----|------------|--------------------------------------|----|---------|------------------------------------|------|---------|--------------------------------------|
| 1  | 92-100-013 | ARMATURE ASSEMBLY 12V 3.625 5SPC 55# | 49 | 2233602 | LOCK BAR, REAR - ZINC              | 98   | 2261701 | LOCKWASHER-STAR                      |
| 2  | 788-015    | RETAINING RING                       | 50 | 2152700 | SPRING-LOCKBAR CAD.PLTD            | 99   | 2263105 | NUT-HEX                              |
| 3  | 140-010    | BALL BEARING                         | 51 | 2262703 | SPRING STOP                        | 100  | 2261715 | SPACER-SWITCH 5 SP MODELS            |
| 4  | 431-101    | CENTER HOUSING ASSEMBLY 3.625 FW TXT | 52 | 2153602 | EYE SHAFT-2LOCKBAR STD-PL          | 101  | 2260170 | KNOB-SPEED CONTROL (5 SPD)           |
| 5  | 2-300-196  | BRUSH END HOUSING ASSEMBLY 3.62 SPCO | 53 | 2260506 | HINGE-PIN HEADLESS ZINC            | 102  | 2263000 | E-RING TRU-ARC#5133-43               |
| 6  | 2-400-101  | PLAIN END HOUSING ASSEMBLY           | 54 | 2293811 | YOKE,MAX MNT-POLYPROPYLENE         | 103  | 2260730 | CONNECTOR 1/4 MALE TAB OD            |
| 7  | 144-049    | BEARING - FLANGE (SERVICE ONLY)      | ■  | 2991869 | BOWGUARD ASSEMBLY- FT CTRL FW      | 105  | 2332103 | SCREW-6-20 X 3/8" THD SS             |
| 8  | 880-003    | **SEAL                               | 55 | 2772315 | BRACKET BASE TOP/EYELET ASSEMBLY   | 106  | 2266413 | TENSION SCREW PLATE FTPEL            |
| 9  | 880-006    | **SEAL WITH SHIELD                   | 56 | 2991999 | BRKT BTTM/BEARING FW ASSEMBLY      | 107  | 2260511 | PIN-PIVOT A/T FT PDL                 |
| 10 | 188-036    | BRUSH ASSEMBLY [2.EA]                | 57 | 2772352 | EYELET KIT                         | 108  | 2992102 | FT PED BASE/PIN ASSEMBLY SONAR       |
| 11 | 725-050    | BRUSH RETENTION- PAPER TUBE          | 58 | 2263402 | SCREW 1/4-20 X 3/4" ZINC           | 109  | 2262301 | PULLEY- FOOT PEDAL                   |
| 12 | 738-036    | BRUSH PLATE W/HOLDER                 | 59 | 2263404 | SCREW-1/4-20X2 1/4" SHCP SS [2.EA] | 110  | 2266400 | COVER-PULLEY STAMPING                |
| 13 | 975-040    | SPRING - TORSION [2.EA]              | 60 | 2261525 | SPRING-SLEEVE UPPER                | 111  | 2223430 | SCREW- #8 X3/4 SS PPH TYPE 25 [4.EA] |
| 14 | 337-036    | **GASKET                             | 61 | 2261535 | SPRING SLEEVE, LOWER               | 112  | 2254031 | SWITCH-MOM/OFF/CON                   |
| 15 | 701-008    | **O-RING, THRU-BOLT [2.EA]           | 62 | 2262706 | SPRING, BOWGUARD, NIK PL           | 115  | 2266412 | SWITCH PLATE, FT PEDAL               |
| 16 | 701-081    | **O-RING                             | 63 | 2011365 | SCREW- COLLAR/NEW KNOB             | 116  | 2332103 | SCREW-6-20 X 3/8 THD SS [2.EA]       |
| 17 | 830-007    | SCREW-8-32 [2.EA]                    | ■  | 2772012 | TUBE W/BEARING RACE ASSEMBLY       | 117  | 2261208 | WIRE HARNESS, A/T FT. PHD            |
| 18 | 830-042    | THRU-BOLT 10-32X8.83" [2.EA]         | 64 | 2272069 | TUBE OUTER-21" 4 HOLES             | 118  | 2267500 | CABLE ASSY-RIGHT (5')                |
| 19 | 990-067    | WASHER- STEEL THRUST                 | 65 | 2266260 | BEARING RACE                       | 119  | 2267510 | CABLE ASSY-LEFT (5')                 |
| 20 | 990-070    | WASHER - NYLATRON [2.EA]             | 66 | 2266220 | BEARING RACE-STEEL                 | 120  | 2265430 | CABLE JACKET (5')                    |
| 21 | 2099092    | MOTOR ASSEMBLY 12V 3.625 5SPC FW 55# | 67 | 2266000 | BEARING BALL-STEEL [2.EA]          | 121  | 2265110 | BOOT-CONTROL BOX                     |
| 22 | 2032061    | TUBE (COMP) W/CSK HOLE-43 3/4"       | 68 | 2266115 | BEARING CONE                       | 122  | 2265115 | BOOT-FOOT PEDAL BASE                 |
| ■  | 1378122    | PROP KIT                             | 69 | 2771617 | COLLAR HALF-ZINC- 2 PER KIT        | 123  | 2372100 | SCREW-8-18 X 5/8 THD SS [2.EA]       |
| 23 | 2091150    | PROPELLER (W.WEDGE)                  | 70 | 2263452 | SCREW-1/4-20 X 3/4" SHCS [2.EA]    | 124  | 2261714 | WASHER-MAXXUM FT PDL [2.EA]          |
| 24 | 2151726    | WASHER-5/16 STD SS                   | 71 | 2260283 | CONTROL BOX COVER -MAXXUM          | 125  | 2261901 | BRACKET-CONDUIT                      |
| 25 | 2053101    | NUT-PROP,NYLOC (MED) 5/16 SS         | 72 | 2372100 | SCREW-8-18 X 5/8" THD SS [4.EA]    | 126  | 2301310 | SCREW-8-18 X 1/2 SS [2.EA]           |
| 26 | 2092600    | PIN-DRIVE (95-4HP'S) SS              | 73 | 2265655 | DECAL-COVER MAX55/SC               | 127  | 2263210 | BRACKET-CONDUIT ADJUSTMEN            |
| 27 | 9008236    | WASHER 1/4 FLAT ZINC [4.EA]          | 74 | 2260150 | POINTER DISC SHORT RED             | 128  | 2262720 | SPRING-CONDUIT AD                    |
| 28 | 2223100    | NUT- TENSION 5/16-18 SS [2 .EA]      | 75 | 2265800 | DECAL-INDICATOR                    | 129  | 2263463 | SCREW-1/4-20 X 2" STL PPH            |
| 29 | 2262605    | PIN- BWGRD UPPER THREADED            | 76 | 2375400 | SHRINK TUBE-1/4OD X 1-3/4" [2.EA]  | 130  | 2355410 | SHRINK TUBE-3/8 OD X 2"              |
| 30 | 2262607    | CLEVIS PIN ZP MAXXUM BWGRD           | 77 | 2053414 | SCREW-#8-32 X 1/2" TRI-LOBE [3.EA] | 131  | 2261225 | LEADWIRE- BATTERY                    |
| 31 | 2260801    | SPRING CLIP                          | 78 | 2267800 | GEAR-INDICATOR                     | 132  | 2256300 | TIE WRAP-5.5" BLACK                  |
| 32 | 2150400    | PULL-GRIP                            | 79 | 2301310 | SCREW-8-18 X 1/2" SS               | 133  | 2263201 | CLAMP WIRE HARNESS MICRO [2.EA]      |
| 33 | 2151700    | WASHER-EYE SHAFT(.562 OD)            | 80 | 2264015 | LIGHT/INDICATOR                    | 134  | 2332103 | SCREW-6-20 X 3/8 THDT SS             |
| ■  | 2771840    | MOUNT- BOW ASSEMBLY, W/BGRD FW STD   | 81 | 2020713 | TERMINAL-ADAPTOR, MAX [2.EA]       | 135  | 2260301 | CONNECTING WIRE (SWITCH)             |
| 35 | 2264241    | ARM-UPPER FW,STD                     | 82 | 2335400 | SHRINK TUBE-1/2 OD X 2" [2.EA]     | 136  | 2260312 | WIRE,BLK W/WHT STRP 19 1/2           |
| 36 | 2293501    | BUSHING, STAINLESS STEEL [4.EA]      | 83 | 2052511 | CABLE CLAMP, 1/4" VANTAGE          | 137  | 2260322 | WIRE,BLK W/BLUE STRP-12"             |
| 37 | 2263500    | BOLT- SHOULDER (MAXXUM) [2.EA]       | 84 | 2232360 | PULLEY-CABLE DRUM                  | 138  | 2256301 | TIE WRAP-5.5" WHITE                  |
| 38 | 2994307    | ARM-LOWER ASSEMBLY,STD,FW,EXT        | 85 | 2261730 | WASHER-NYLON A/T CON B             | 139  | 2266414 | BOTTOM PLATE MAX FOOT PED            |
| 39 | 2263912    | MOTOR REST STD MAXXUM                | 87 | 2996246 | TOP BEARING RACE/ PINION DR        | 141  | 9953104 | SCREW-8 X 1/2" SS [8.EA]             |
| 40 | 2265514    | DECAL-MAXXUM,MOTOR REST [2.EA]       | 88 | 2263410 | SCREW-8-32 X 5/16" ZN PL [2.EA]    | 142  | 2262535 | CONTROL BOX-PLASTIC                  |
| 41 | 2261505    | SPACER, MOTOR REST [6.EA]            | 90 | 2790002 | FOOT PEDAL/PLUG ASSEMBLY (AT)      | 143  | 2267800 | GEAR-INDICATOR [2.EA]                |
| 42 | 2773987    | BOWPLATE/INST ASSEMBLY STD FW        | 91 | 2263700 | PUSH-BUTTON FOOT PEDAL             | 144  | 2262220 | INDICATOR-DRIVE                      |
| 43 | 2251601    | ROPE (40"), MAXXUM MOUNT             | 92 | 2302732 | SPRING-LOWER PEDAL SS              | 145  | 2261905 | BRACKET/INDICATOR                    |
| 44 | 2261708    | WASHER-3/8X1/2X.010" SS [2.EA]       | 93 | 2264020 | SWITCH MOMENTARY                   | 146  | 2301310 | SCREW-8-18 X 1/2" SS                 |
| 45 | 2236000    | BEARING NYLINER-[2.EA]               | 94 | 2265140 | BOOT-MICROSWITCH                   | ■    | 2994830 | BAG ASSEMBLY-MAXXUM                  |
| 46 | 2263434    | SCREW, 8-18 X 1" PPH SS [2.EA]       | 95 | 2262114 | SCREW-MOUNTING/SWITCH [2.EA]       | *147 | 2263431 | SCREW 1/4-20 X 3.5" PPH [6.EA]       |
| 47 | 2152610    | SPRING-PIN LOCKBAR [2.EA]            | 96 | 2233100 | NUT-SWITCH MOUNT [2.EA]            | *148 | 2261713 | WASHER-1/4 FLAT SS [6.EA]            |
| 48 | 2233600    | LOCK BAR- BOW MOUNT                  | 97 | 2264026 | SWITCH-5 SPEED (ALL TERRAIN)       | *149 | 2263103 | NUT-1/4-20 NYLOCK-JAM SS [6.EA]      |

\*\*Seal & Oring Kit P/N 2888460 \* This item is part of an assembly. This item cannot be sold separately due to machining and /or assembly that is required.

P/N 2264956 REV.A 8-01

